

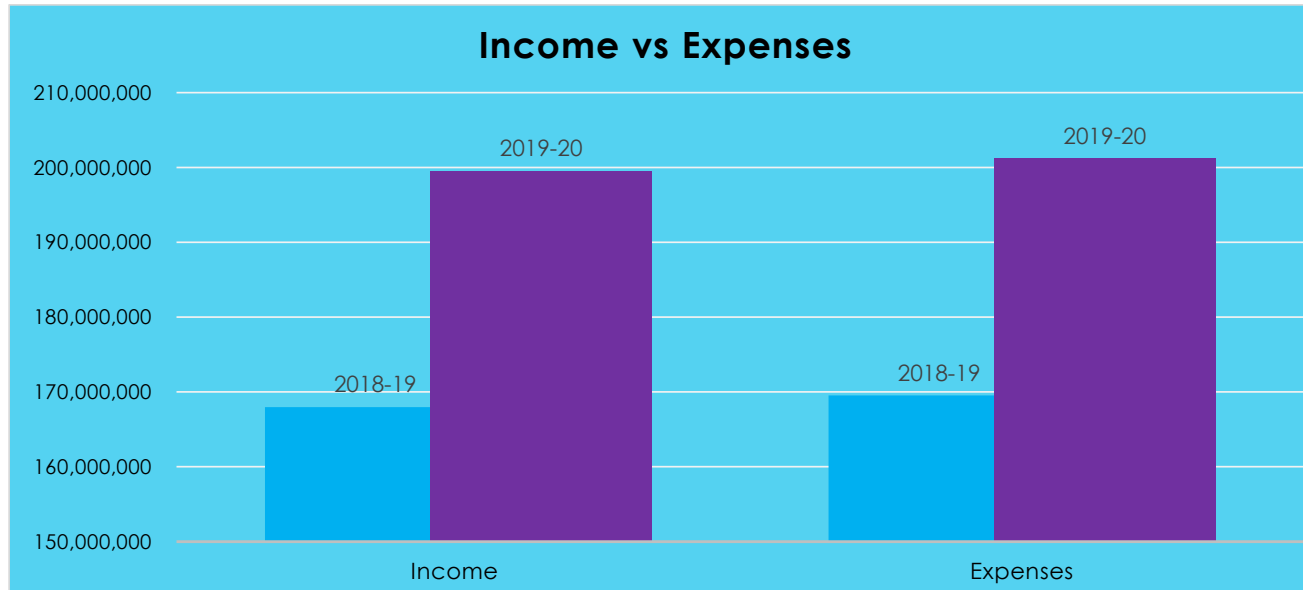
Laeque Rafiq Foundation

Financial Statistics

FY 2019-20

Income Statement

	2018-19	2019-20
Income	167,982,541	199,560,874
Expenses	169,533,228	201,194,861
Deficit/Surplus	(1,550,687)	(1,633,987)

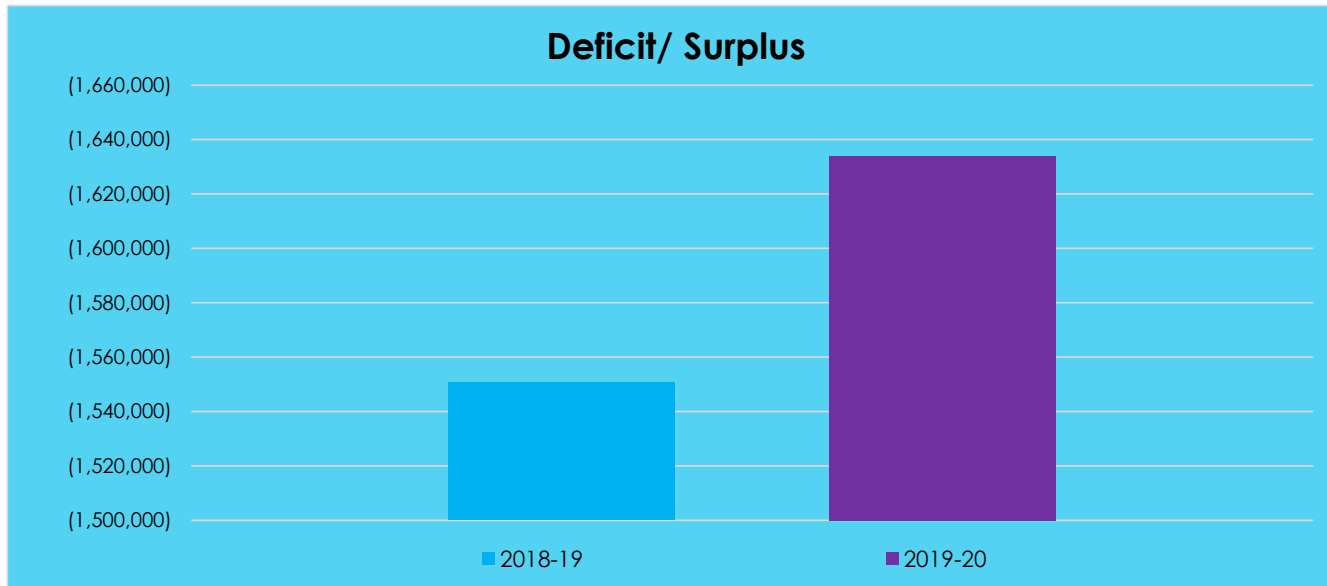


Deficit/ Surplus

Deficit/ Surplus

2018-19
(1,550,687)

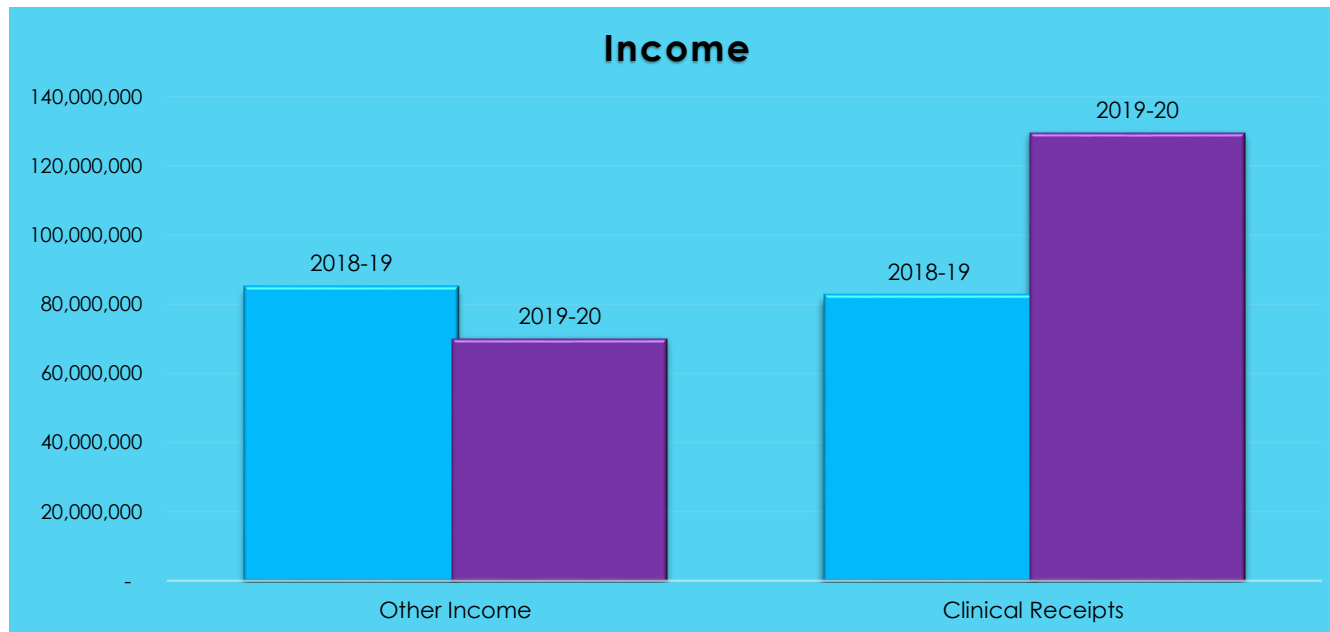
2019-20
(1,633,987)



Income

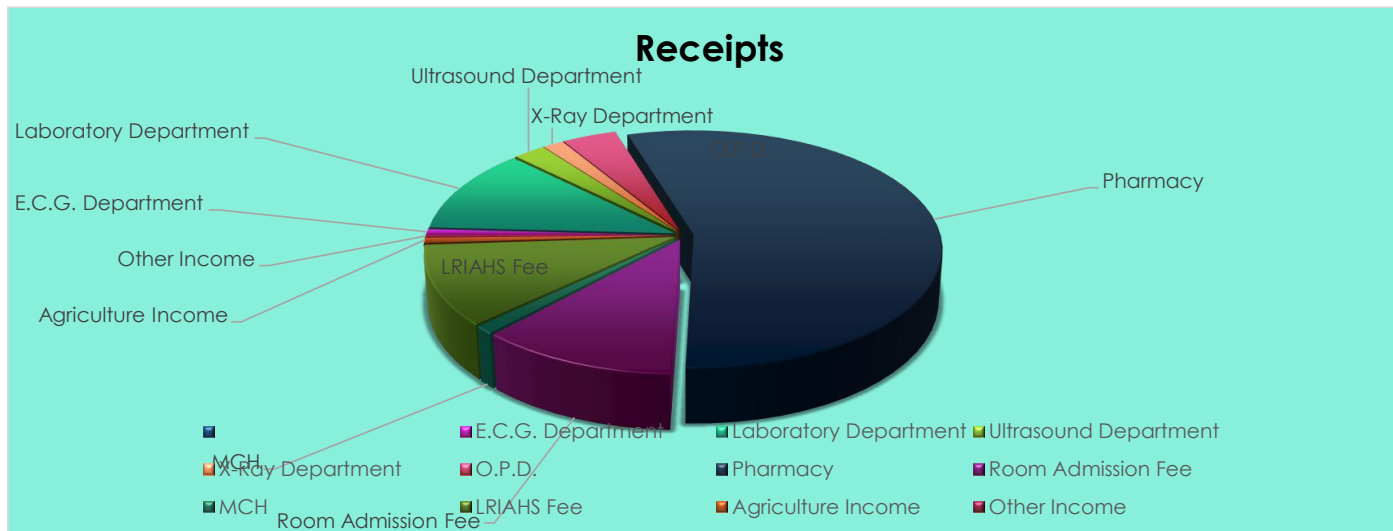
Other Income
Clinical Receipts

	2018-19	2019-20
Other Income	85,177,701	70,055,468
Clinical Receipts	82,804,840	129,505,406
	167,982,541	199,560,874



Receipts

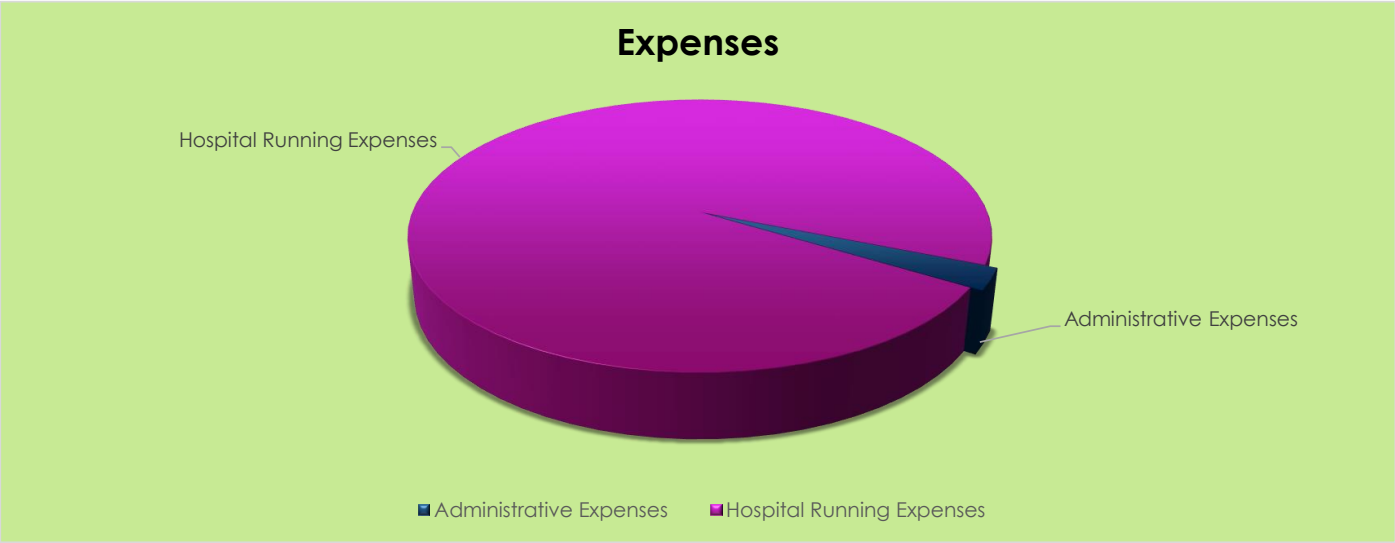
E.C.G. Department	838,165
Laboratory Department	11,882,687
Ultrasound Department	2,422,525
X-Ray Department	1,567,645
O.P.D.	4,094,453
Pharmacy	56,730,627
Room Admission Fee	11,686,504
MCH	1,131,580
LRIAHS Fee	11,234,700
Agriculture Income	743,168
Other Income	317,900



Expenses

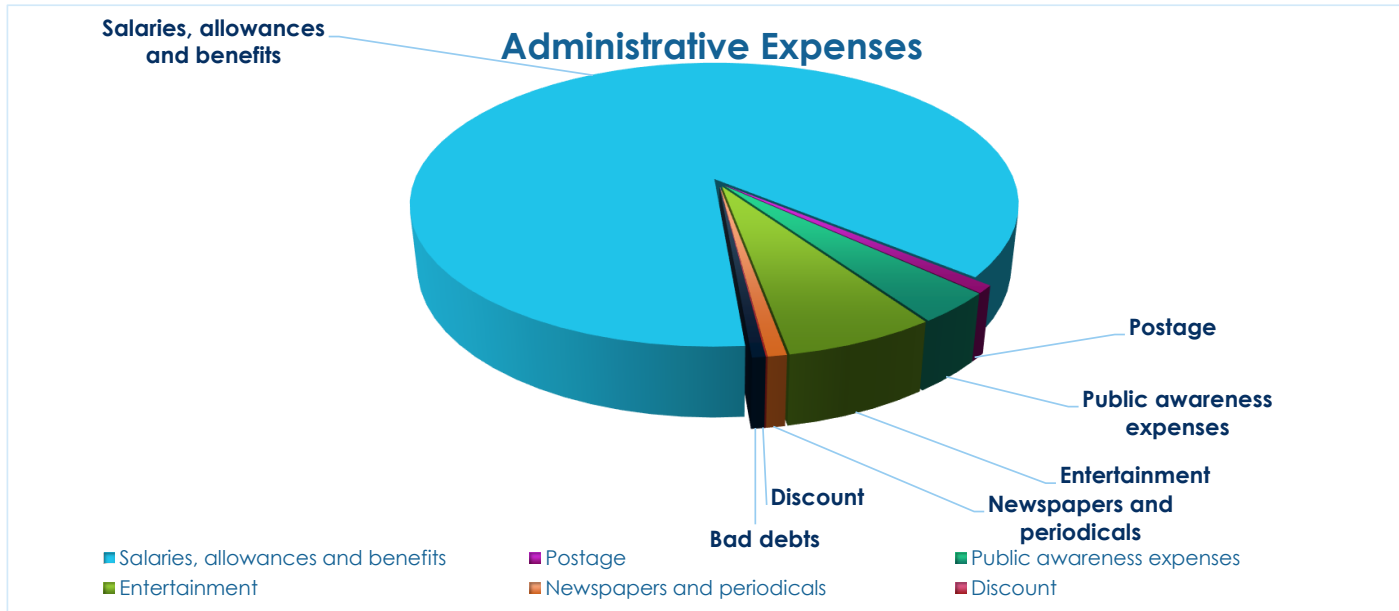
Administrative Expenses
Hospital Running Expenses

5,195,054
195,973,905



Administrative Expenses

Salaries, allowances and benefits	4,536,320
Postage	45,769
Public awareness expenses	182,690
Entertainment	351,738
Newspapers and periodicals	44,150
Discount	3,470
Bad debts	30,917



Hospital Running Expenses

Salaries, allowances and benefits	82,700,594
Consultant charges	18,715,829
Diagnostics department expenses	4,387,915
Pharmacy expenses	43,347,120
Medical gases	985,095
MCH operational expenses	978,839
Utilities	11,411,364
Printing and stationery	3,275,534
Ambulances & Vehicle running expenses	2,848,312
Repairs and maintenance	1,518,030
Rent, rates and taxes	3,817,618
Depreciation	21,470,768
Miscellaneous	516,887

